



ATLAS®

Product References

ATLAS®

Elastic Impactable Acetabular Cup

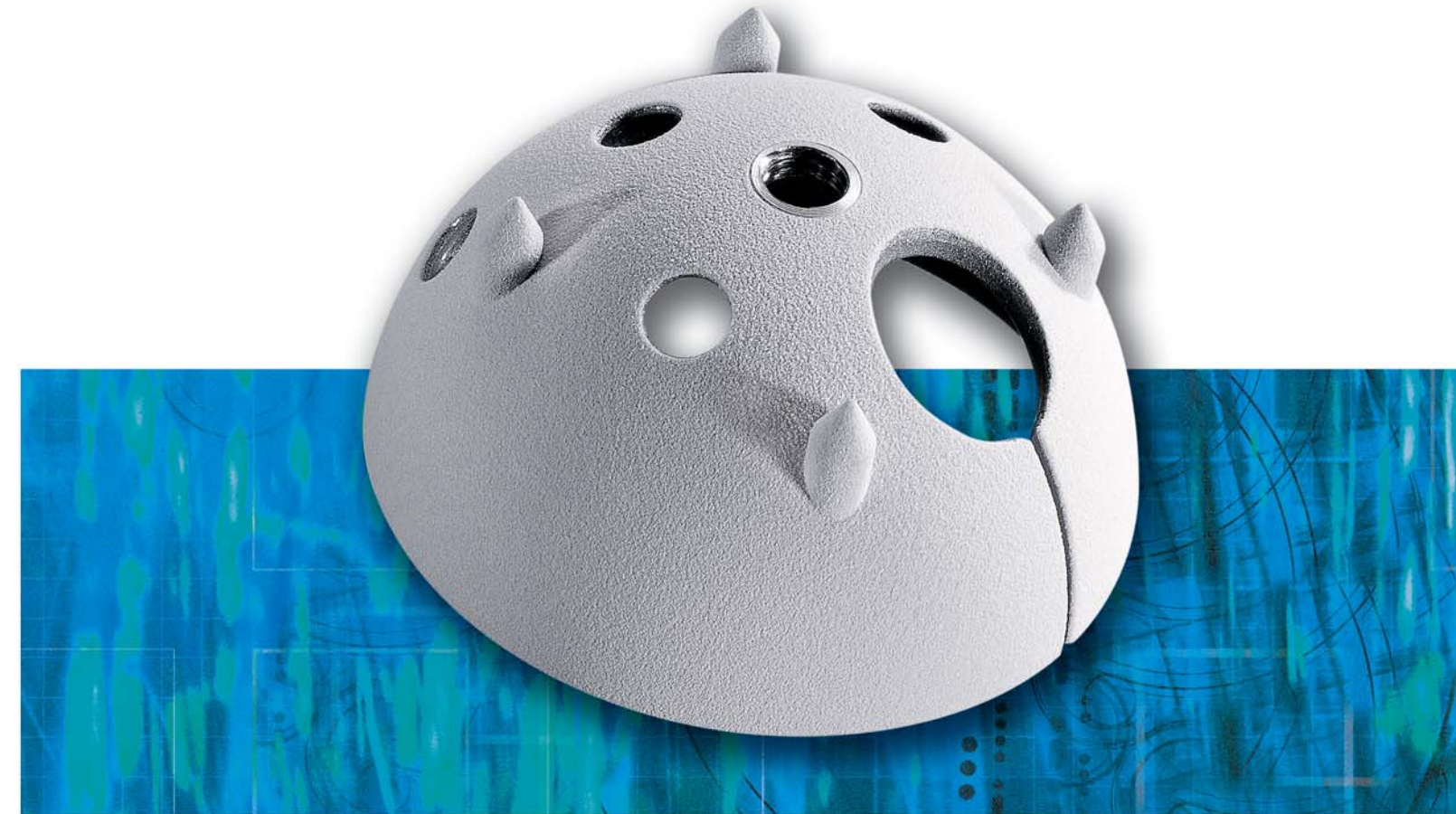
DESCRIPTION **EXTREME SIZES*** **SIZES AND REFERENCES*** **EXTREME SIZES***

CUP	Ø Ext. in mm	40	42	44	46	48	50	52	54	56	58	60	62	64	66	68	70	72	74
	ATLAS III-P (WITH SCREW HOLES)					241363	241364	241365	241366	241367	241368	241369	241370	241371	241372	241373	241374	241375	241376
ATLAS IV (WITHOUT SCREW HOLES)	222506	222510	217412											217422	217423	217424	217425	217426	217427
ATLAS IV-P (WITHOUT SCREW HOLES)				246329	246330	246331	246332	246333	246334	246335	246336	246337							

INSERT (Internal Diameter in mm)	C INSERT PE 22,2	222508	222509	217489	232139	232140	232141	232142	232143	232144	232145	232146	232147	232148	217500	217501	217502	217503	217504	
	STANDARD INSERT PE 28				217522	217523	217524	217525	217526	217528	217529	217530	217531	217532	217533	217534	217535	217536	217537	
	ANTIDISLOCATION INSERT PE 28				217461	217462	217463	217464	217465	217466	217467	217468	217469	217470	217471	217472	217473	217474	217475	
	ALUMINA INSERT 28						234104	234105	234106	234107	234108	234109	234110							
	STANDARD INSERT PE 32						217538	217539	217540	217541	217542	217543	217544	217545	217546	217547	217548	217549	217550	

EXTREME SIZE* : on request

SCREW Ø 6,5 mm	Length in mm	15	20	25	30	35	40	45	50
	Réf.		207110	207111	207113	207115	207117	207120	207122



50-20119651 - Fournitures Hospitalières



CE 0459 www.atlas-hip.com

Elasticity provides stability
www.atlas-hip.com

FH ORTHOPEDICS. S.A.S.

B.P. 9 - F-68990 HEIMSBRUNN (FRANCE) - TEL : 33 3 89 81 90 92 - FAX : 33 3 89 81 80 11 - E-MAIL : orthopedie@f-h.fr / Website : www.f-h.fr



USA, **FH** ORTHOPEDICS. INC

909 Third Avenue, Suite 500 - NEW YORK, NEW YORK 10022 - TEL : 646 - 495 - 3112 - FAX : 646 - 495 - 3113 - E-MAIL : fsanti4651@aol.com



quality for health



ATLAS®



ATLAS®

The design concept of the **ATLAS®** cup is based on two fundamental principles :

- Respect of the anatomy and physiology of the acetabular bone.
- Use of maximal thickness of polyethylene.

DESIGN FEATURES

ATLAS® is an hemisphere :

Shaped like the acetabulum, the **ATLAS®** cup can be implanted while preserving the maximum original bone.



ATLAS® is elastic :

The **ATLAS®** acetabular cup is made of a titanium alloy. The choice of this metal, the thinness of its walls, and the design of a slot located between the acetabular horns, provide the **ATLAS®** acetabular cup with its original elastic qualities.



ATLAS® is hydroxyapatite coated :

It takes advantage of the recognized osteoconductive properties of hydroxyapatite.

ATLAS® has an important thickness of polyethylene

The thinness of the **ATLAS®** metal cup enables the insert to supply a maximum of polyethylene.

ATLAS® offers a wide range of acetabular cups :

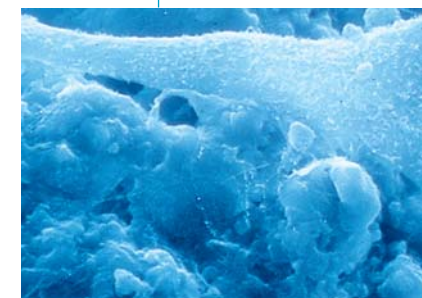
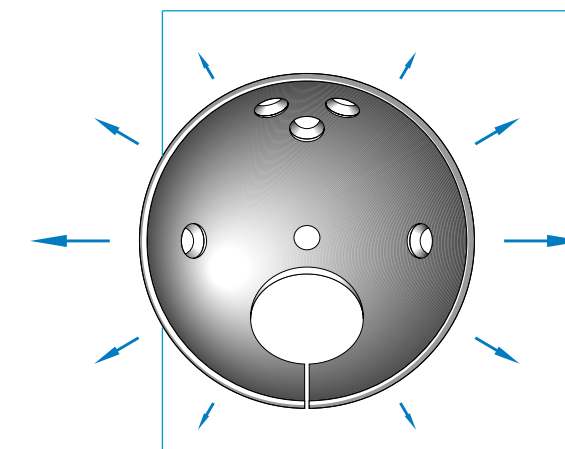
The **ATLAS®** metal cup, made of a titanium alloy, TA6V ELI, is available in 18 sizes, graduating by 2 mm steps from 40 to 74 mm outside diameter. The polyethylene insert is available in 3 sizes with inside diameters of 22.2, 28, and 32 mm

ELASTICITY PROVIDES STABILITY

“PRESS-FIT” AND PRIMARY STABILITY :

Thanks to the elasticity, the **ATLAS®** cup can be fitted one size larger in diameter than the last reamer used, with no risk of either excessive stress on the edges or of micro fracturing.

The expansion capacity of 400 Newtons thus obtained guarantees a strongly bonded press-fit.



Osteoblast fixed onto a deposit of HAP.

Secondary stability :

The surface treatment of the external wall, and the hydroxyapatite (HAP) coating, ensure a rapid and lasting osseo-integration without fibrous tissue interposition.

Stability of the insert :

The elastic **ATLAS®** cup exerts a strong lock on the **thick, massive insert** with no weak points such as pegs or fixing rings.

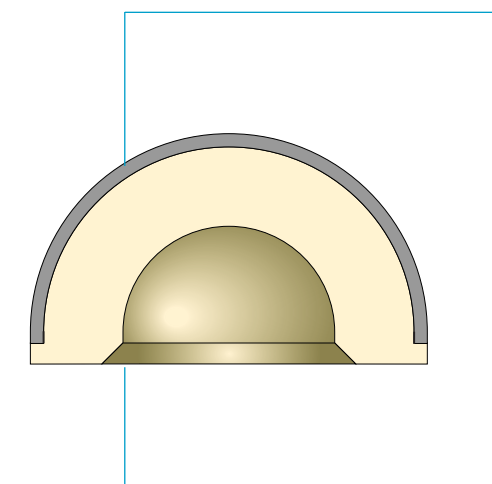
The cylindrical periphery of the insert and the fixing collar avoid all risks of tipping.

Two types of cores are available :

1 all -polyethylene inserts :

- PE 22.2 C insert
- PE 28 standard insert
- PE 28 antidislocation insert
- PE 32 standard insert

2 alumina and polyethylene inserts, which combine the advantages of the alu/alu friction torque and the results of some of the properties of PE.



ATLAS® convincing results :

*In the world, since 1987, nearly 100 000 **ATLAS®** have been implanted. The quality of the **ATLAS®**, results, together with the significant feed-back, guarantee its long-term effectiveness.*